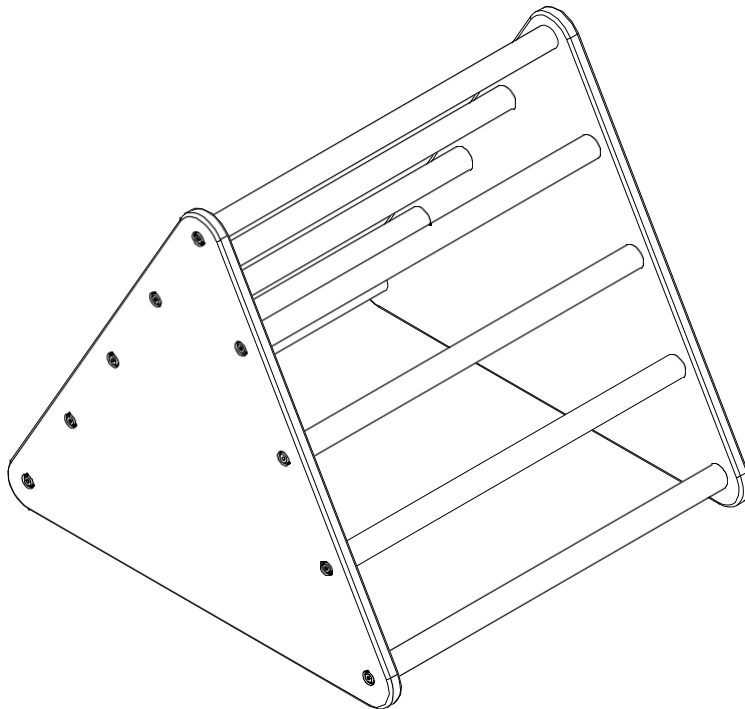


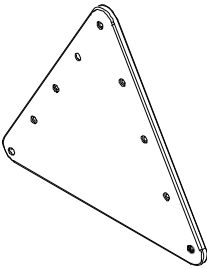
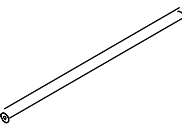
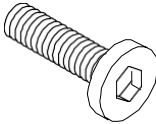
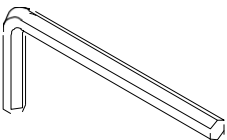
myhappyhelpers

play. create. discover.

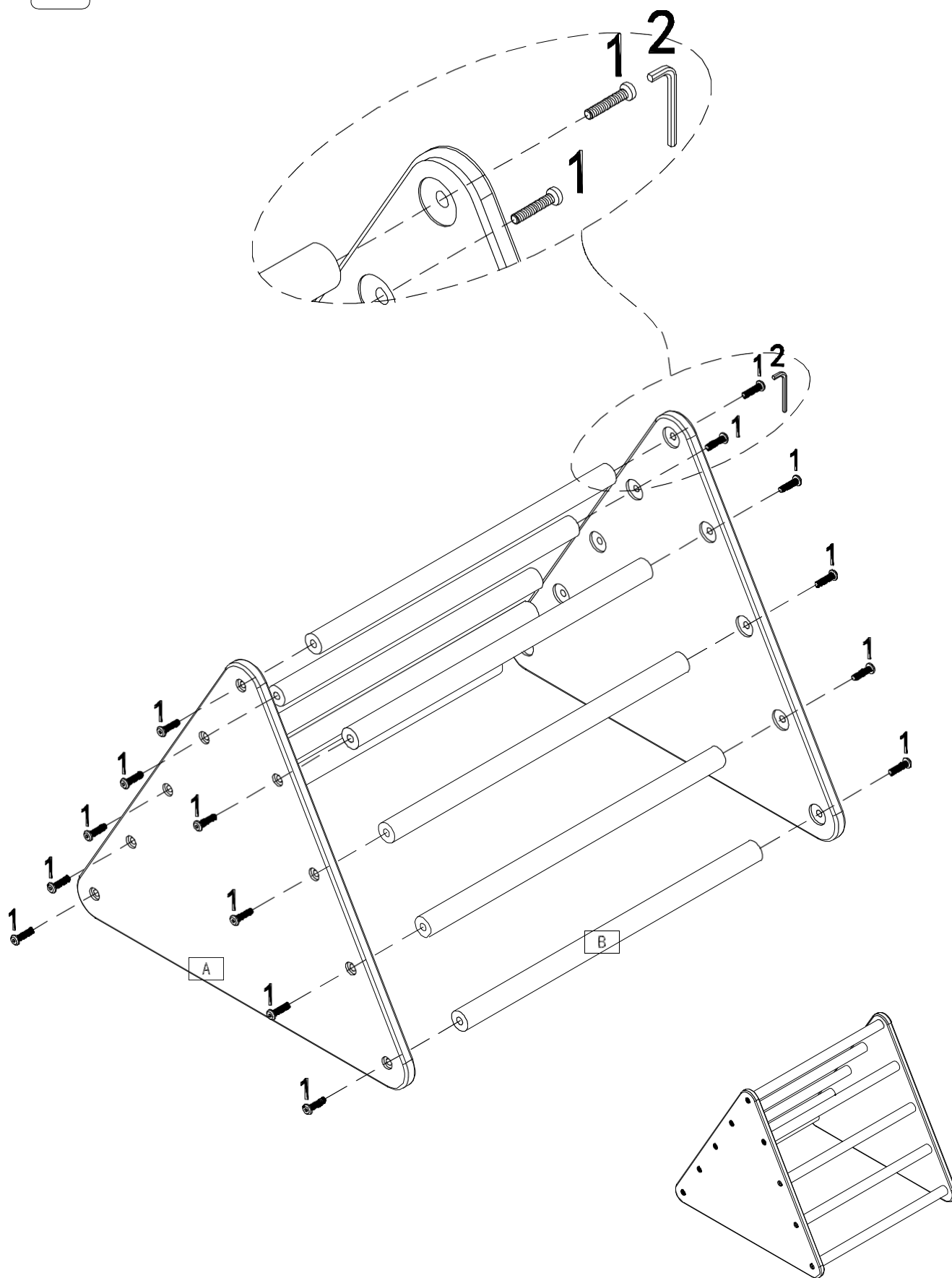
Assembly instruction

These assembly instructions must be read in conjunction with the Addendum to the safety instructions attached. This provides guidance on safety and usage of the product.



A	B	1	2
 2PCS	 9PCS	 18PCS	 1PCS

1



ADDENDUM TO ASSEMBLY INSTRUCTIONS: INSTRUCTIONS FOR USE - IMPORTANT! READ CAREFULLY AND KEEP FOR FUTURE REFERENCE

Manufacturer: My Happy Helpers

Address: 1591, 1007 N Orange Wilmington, DE, New Castle US 19801

Telephone: 1 (800) 458-3750

www.myhappyhelpers.com

Product: Bambino Climber

Grading: 6 months to 3 years

Made in PRC

Observing the following statements and warnings reduces the likelihood of serious or fatal

injury.  **WARNINGS**

- Do not use this product over hard surfaces as this increases the risk of serious head injuries if the child falls from the equipment.
- Do not place this product near a window as it can be used as a step by the child and cause the child to fall out the window.
- Do not place this product close to components which could present a danger of suffocation such as for example: blind/curtain cords.
- Do not allow children to wear inappropriate items, such as but not limited to, loose fitting clothing, hood and neck drawstrings, scarves, cord-connected items, capes and ponchos. These items can cause death by strangulation.
- Do not allow children to climb on this product if it is wet or has any liquid on it that makes it slippery.
- Instruct children to remove their bike or other sports helmet before playing on the equipment.
- When using this product please dress children with well-fitting and full foot enclosing footwear. Examples of inappropriate footwear are clogs, flip flops and sandals.
- Keep this product inaccessible to children when not in use. Adult supervision required at all times.
- Do not use if any of the components are broken, torn or missing.
- This product must not be used by adults.

- The screws and parts used in assembly are small parts. These must not be accessible to children under 3 years of age.

Operating Instructions

- This product must only be used indoors. DO NOT use this product outdoors.
- The product must be assembled by an adult in accordance with the assembly instructions attached.
- Do not over-tighten hardware as this may cause the wood to crack. Do NOT use an electric drill to assemble.
- Place this product on a level surface, not less than 6ft (1.8m) from any structure or obstruction.
- Do not install this product over any hard surface. A fall onto a hard surface can result in serious injury or death to the user.
- This product must not be used until all aspects of the assembly instructions are completed and properly placed in a position for climbing.
- The product must only be used under adult supervision at all times.
- Instruct the child to only use the equipment for the purpose it was designed.
- This product is designed to be used by 1 child at a time.
- Keep this product out of reach of children when not in use.
- Instruct the children not to attach items to the equipment not specifically designed for use with the equipment.

Ongoing maintenance of the Product

- At the beginning of each play session check to ensure that all hardware is still secure.
- Check all wood members for deterioration including splinters (which we do not expect to occur). In the unlikely event that a splinter is present please email My Happy Helpers customer support.
- Over time and at regular intervals an adult should carry out checks of the product. This should include checking during play the screws for tightness and tighten when required. Care should always be taken to ensure no screws are ever lose because a child could trap parts of their body or clothing (eg strings, necklaces, ribbons for babies' dummies, etc) which could pose a risk of strangulation.
- If there is a need to clean this product, please wipe down with a damp cloth and dry immediately.
- Owners are responsible for maintaining the legibility of the warning labels.
- Do not use the product if any part is broken or missing.
- Only use spare parts approved by My Happy Helpers.

Disposal Instructions

- When the owner decides to disassemble or dispose of this product please ensure that no unreasonable hazards exist at the time this product is discarded.
- When the product is disassembled the screws and parts are small parts. These must not be accessible to children under 3 years of age.